

# ADDERLink <sup>ADDERLINK</sup>ipeps

The AdderLink ipeps product is part of the Adder's 'ipeps' (IP Engine per Server) concept that delivers a complete, secure, non-blocking approach to computer management.

A powerful and flexible KVM-over-IP product contained within a palm-sized unit, the AdderLink ipeps enables computer access from anywhere in the world, securely and remotely via the Internet or corporate network. The AdderLink ipeps uses RealVNC client software that is specifically designed for secure, high performance KVM-over-IP applications.

Despite its small size, there is no compromise in the performance of the AdderLink ipeps. By using Adventiq Inside® on-chip KVM-over-IP technology, an extremely high performance solution can be contained in a compact unit.

For Enterprise KVM solutions the AdderLink ipeps provides a non-blocking global solution by providing each computer with a dedicated KVM-over-IP engine. This can be enhanced by using the ADDER.NET Enterprise Management Software that provides a centralised and secure user access management interface.

This platform independent device is ideal for server hosting companies who wish to offer KVM-over-IP services to their customers.

Increasing numbers of computers are being used in remote, stand alone applications such as ATMs and digital signage play out devices. The incredibly small size of the AdderLink ipeps makes it perfect for remote management and control of dispersed computers, meaning that many tasks that would have required an expensive site visit can now be done from anywhere.

## FEATURES

### Independent operation

Gives full control even during boot up, BIOS level or computer crash states. The AdderLink ipeps will work even if the controlled devices are not operational.

### High video performance

The AdderLink ipeps can use a standard web browser but for superior graphical performance, RealVNC is used. Free of the limitations of HTTPS, RealVNC greatly enhances video performance.

### Highly secure

Employing enterprise grade security (using AES 128 bit encryption and RSA 2048 bit public key authentication) as standard, the AdderLink ipeps is further enhanced by the use of RealVNC that allows for the creation of ciphered user communications.

### User management

Knowing who does what and when is crucial for any remote access service. The AdderLink ipeps can create up to 16 user profiles with defined access rights.

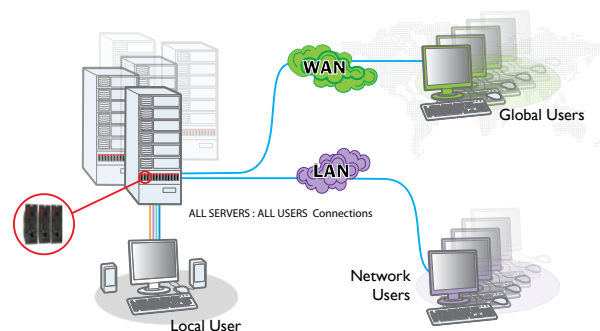


### Global user control and access management

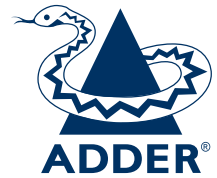
Where many AdderLink ipeps devices are used it is important that user access to devices is both secure and quick. Optional ADDER.NET Enterprise Management Software allows for an unlimited number of devices to be seen and accessed at the click of a button.

### Virtual media support

To transfer files from remote users to controlled computers, the AdderLink ipeps has been engineered to act as a conduit through which data can be passed. Files can be transferred via IP on to the AdderLink ipeps and on to the target computer by means of a USB virtual media port.



Local, Remote and Global Computer Control



# ADDERLink ADDERLINK ipeps

The AdderLink ipeps product is part of the Adder's 'ipeps' (IP Engine per Server) concept that delivers a complete, secure, non-blocking approach to computer management.

## TECHNICAL SPECIFICATIONS

<b>Video resolutions</b>	Supports standard PC, Sun and Mac video modes up to resolutions of 1600x1200 with scalable viewer
<b>Hardware compatibility</b>	Supports PC, RS/6000, Alpha, SGI computers, Sun and Mac. USB or PS/2 connections supported
<b>OS compatibility</b>	All known software and operating systems including Windows (all), DOS, Linux, Unix, BSD, Sun OS, Solaris, Mac OS, NetWare etc.
<b>AdderLink ipeps to computer connection</b>	Video: HDD I5, Keyboard/Mouse: MiniDIN6 1m 3-in-1 cable supplied (USB converters also included)
<b>Local console (DA model only)</b>	Video: HDD I5, Keyboard/Mouse: MiniDIN6
<b>Connections</b>	Ethernet: RJ45 10/100 autosensing
<b>Physical design</b>	Compact case, robust metal construction. ipeps 120mm/4.72" (w), 27mm/1.06" (h), 75mm/2.95" (d), 0.34kg/0.76lbs. ipeps DA 120mm/4.72" (w), 42mm/1.65" (h), 75mm/2.95" (d), 0.46kg/1.02lbs. 16 or 8 (DA) per 2U. Rack mount kits available (X-RMK plus relevant fascia plate)
<b>Power supply</b>	100-240VAC, 47/63Hz
<b>Operating temperature</b>	0°C to 40°C / 32°F to 104°F
<b>Order Codes</b> (XX= Mains Lead Country Code: <b>UK</b> = United Kingdom <b>US</b> = United States <b>EURO</b> = Europe <b>AUS</b> = Australia)	AL-IPEPS-XX AL-IPEPS-DA-XX (Dual Access IPEPS)

Local, Remote and Global Computer Control



### ADDER TECHNOLOGY

Technology House, Trafalgar Way, Bar Hill,  
Cambridge, CB23 8SQ UK  
Tel: +44 (0)1954 780044 Fax: +44 (0)1954 780081  
email: sales@adder.com www.adder.com

### ADDER CORPORATION

350R Merrimac St.  
Newburyport, MA 01950 USA  
Tel: +1 888 932 3337 Fax: +1 888 275 1117  
email: usasales@adder.com www.adder.com

### ADDER TECHNOLOGY ASIA PACIFIC

6 New Industrial Road  
#07-01 Hoe Huat Industrial Building, Singapore 536199  
Tel: +65 6288 5767 Fax: +65 6284 1150  
email: asiasales@adder.com www.adder.com